

# CPESN CIN Training

Part 1: Introduction and Overview

As of: December 2025

# Introduction & Overview to CPESN and CIN

# What is a CIN?

A Clinically Integrated Network (CIN) is a **collaborative alliance** of healthcare providers committed to improving patient care through shared clinical protocols, coordinated treatment strategies, and performance-based accountability. A CIN functions under a legal and operational framework that allows independent entities to work together to deliver value-based care.

Otherwise, competing businesses are not allowed to collectively negotiate except under two circumstances:

- They share substantial financial risk (think big chains/mass merchants), or
- They are clinically integrated.

# Why do CINs Matter?

- Industry is shifting from fee-for-service to value-based models
- CINs offer a structured and legally compliant way for providers to collaborate, reduce costs, improve quality, and better engage patients.
- CINs enable participation in alternative payment models and improve health outcomes through integrated services.

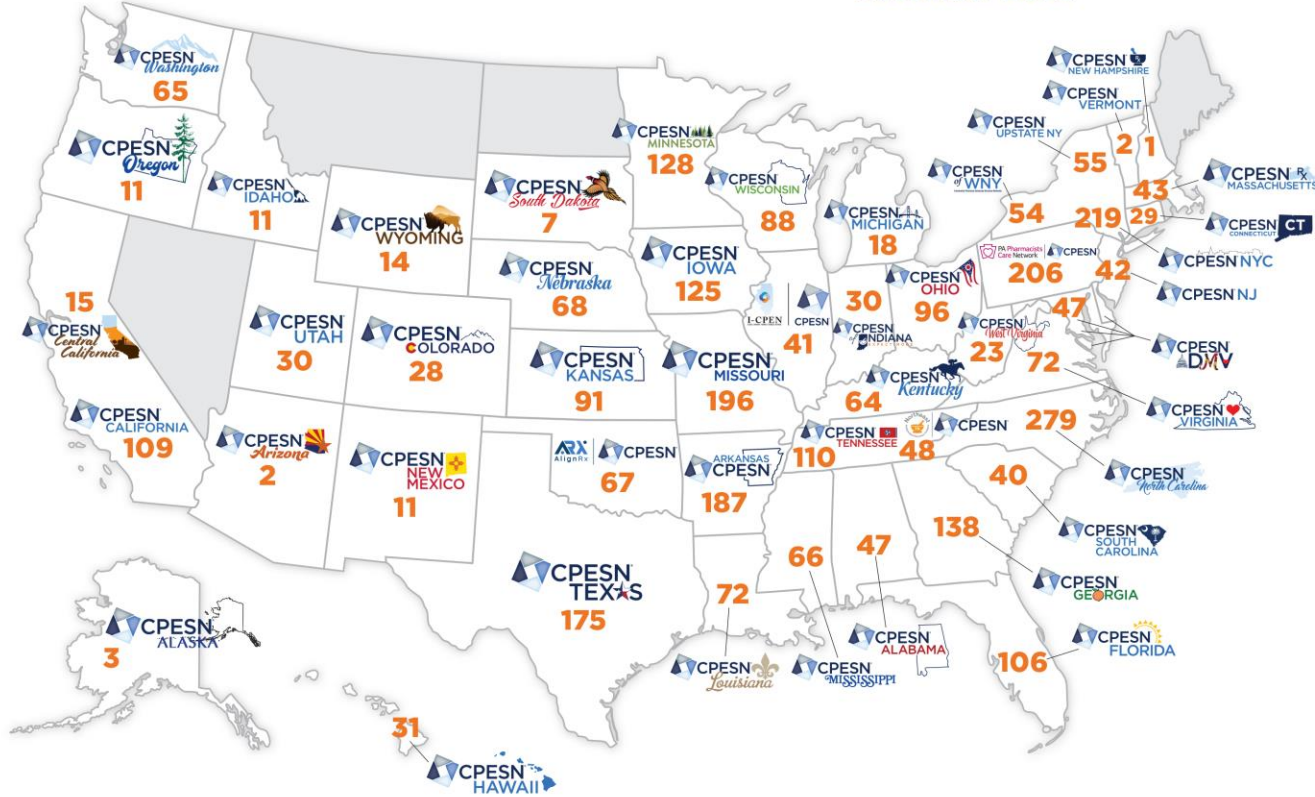
# Key Components of our CPESN CIN

CPESN USA is a clinically integrated network and demonstrates as much through its funding and governing structure as well as its activities, including:

- Spending over 50% of its resources on quality assurance, quality improvement, best practices and new, innovative services lines
- Governed by pharmacy owners (providers)
- Driving quality standards along with new and novel services offerings
- Conducting regular quality reviews of participating pharmacies – Quality Assurance Standard
- Making investments in technology for sharing data, measurement and quality reporting
- Requiring “Skin in the Game” through participation fees
- Being selective in who participates and removing pharmacies that don’t perform.

# CPESN Networks

December 2025



# CPEsn USA's Mission Statement

"As a Clinically Integrated Network, CPEsn pharmacy providers collectively deliver health services to improve quality of care for patients in their local communities and to lower total cost of care. CPEsn USA incorporates innovation and technology to empower its networks of pharmacies to succeed in an evolving outcomes marketplace. Transparency in value contracting ensures sustainability of independent community pharmacies as they leverage local trust for new provider and payer partnerships."

# About CPESN & Our Leadership

## CPESN Network Leadership

Each of the 48 local CPESN Networks has a leadership team that consists of:

- **Luminaries** – network dependent, but generally pharmacy owners or co-owners who are spokespersons and set the strategic plan and goals for the network
- **Managing Network Facilitators** – individuals who drive the activities of the network including payer engagements
- **Account Managers** – team members who organize network activities including meetings and update calls, among other duties
- **Network Affiliates** – team members who assist as needed

# CPESN USA Structure

CPESN USA, LLC is owned by Community Care of North Carolina (CCNC) a 501c(3) charitable nonprofit and the National Community Pharmacists Association (NCPA) a 501c(6) advocacy nonprofit.

CPESN USA is managed by its local Chapter Networks and community pharmacy participants through its Board of Managers.

# CPESN USA Structure

CPESN USA, LLC was set up to have checks and balances in place to ensure that the company worked for the benefit of its participating pharmacies.

- Networks with 40 or more pharmacy participants on August 1st of each year are provided one appointment to the Board of Managers.
- Networks with 400 or more pharmacy participants are afforded two appointments.

*\*Board terms are one year each with no term limits.*

Board of Managers must:

- Be an owner or co-owner of at least one pharmacy that participates in the network appointing them.
- Contribute as a pharmacy workforce member at least 500 hours a year.
- Be an NCPA member.

# How is CPESN Different?

- CPESN is a provider-run and operated network of networks
  - The purpose of a provider-run network is to maintain the ability to bring new services to the marketplace together as a network of thousands in a "trust, but verify" relationship to ensure that you have mutually beneficial relationships with partners and purchasers— not one-sided relationships
- CPESN is the first to organize at a multi-state scale as a provider network
- CPESN USA has NEVER kept a dime from any local or national payer program.

# The Value and Importance of Provider Run Network

- **Providers:** Better care coordination, shared savings, clinical support
- **Patients:** Improved care experience, better outcomes, fewer duplications
- **Payers:** Reduced costs, higher quality scores, measurable value

# CPESN USA Structure

## CPESN Luminary Committees

- Network Development and Retention

- To assist the Director of Network Development in the development and implementation of a strategic plan focused on building replicable, sustainable local community-based pharmacy networks.

- Payer, Partner, Purchaser

- To review payer opportunities and payer models, including traditional fee-for services (FFS) and value-based arrangements and provide evaluations and opinions regarding such opportunities to CPESN's executive team and the Board of Managers.

- Technology

- To evaluate current technology in the marketplace, assess technology needs in the networks and CPESN USA, and to work with technology partners who can help support the mission and vision of CPESN USA and its local Networks and advise the Board of Managers regarding the same

- Quality and Performance

- To evaluate quality initiatives and population-based payment and value-driven performance models and provide guidance and feedback to the Board on these efforts



# CPESN USA Structure

## CPESN Standing Committees

- Compliance Committee

- Assists and guides the Compliance Officer in the continuing development, implementation, monitoring, and enforcement of the Compliance Plan and ensures the Board is active, well-informed, and empowered to carry out its oversight responsibilities regarding compliance with all applicable laws and regulations.
  - **Medical Billing Supports Subcommittee** - *provides technical expertise to the Compliance Committee, assists staff in monitoring the quality and integrity of participant pharmacy health plan billing activities and trends, and provides reports to the Compliance Committee upon request to assist in resolving incidents and reports that are brought for review.*

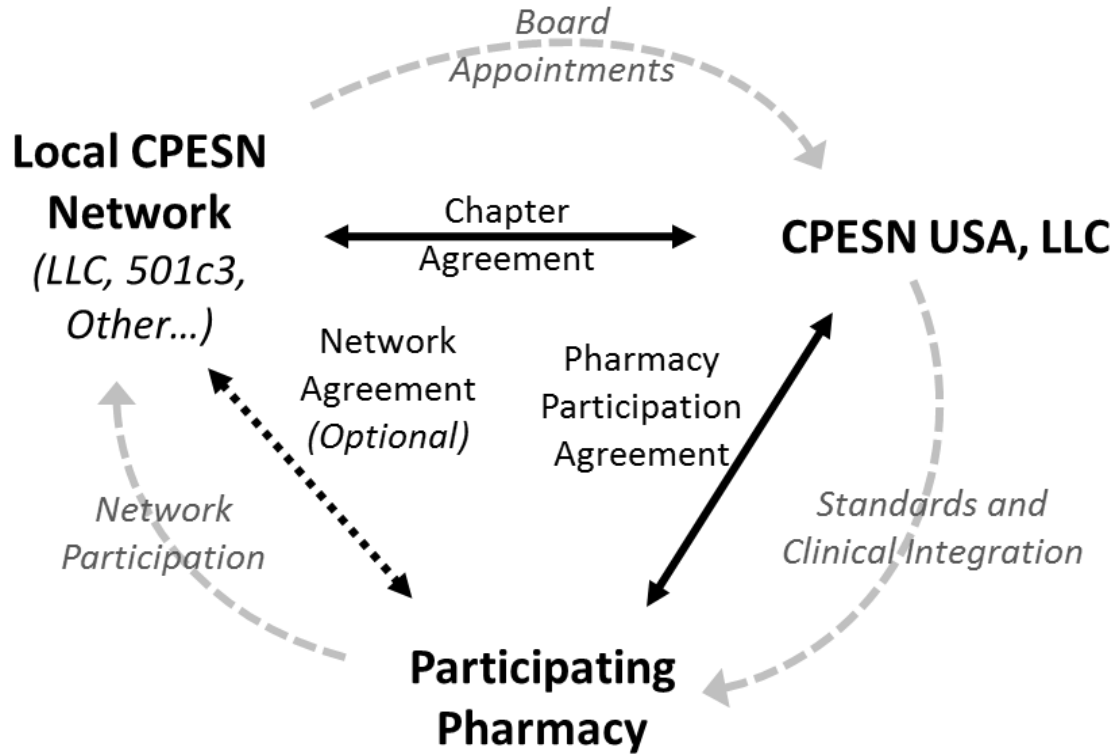
- Executive Committee

- Provides guidance and direction to CPESN's executive team as solicited and exercises the powers of the Board in relation to matters that arise between regularly scheduled Board meetings or when it is not practical or feasible for the Board to meet.

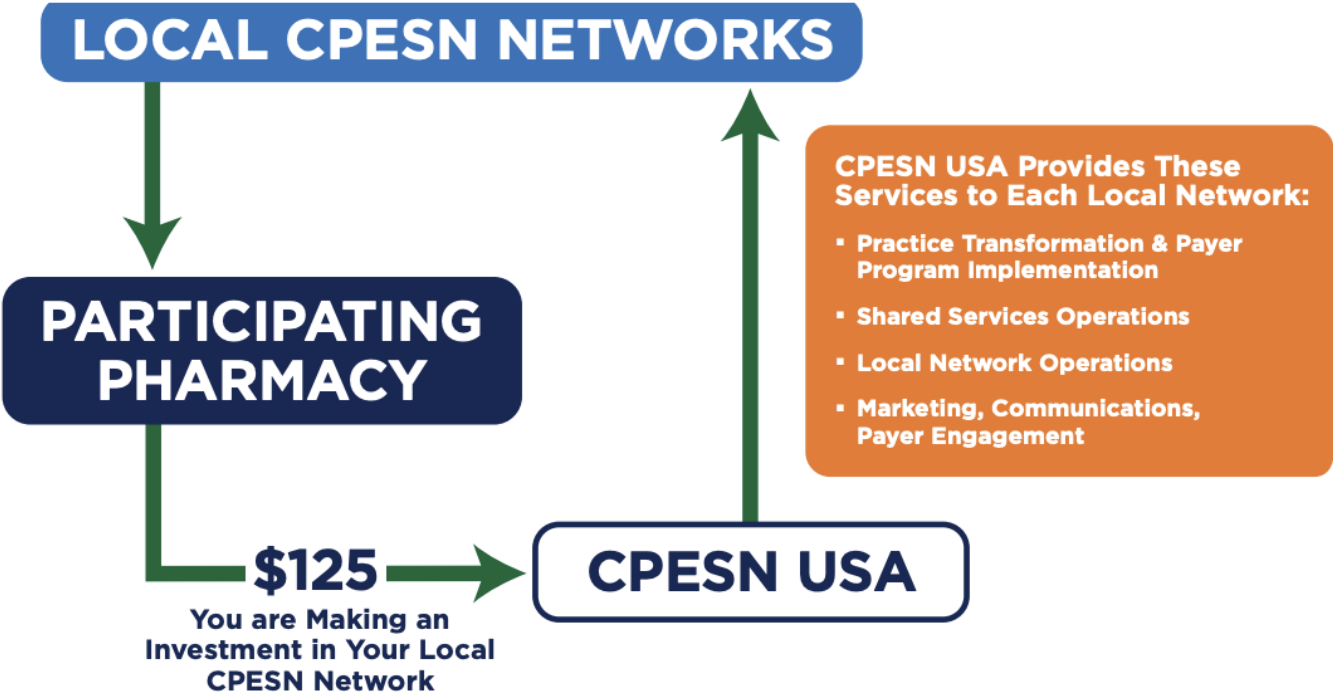
- Finance Committee

- Oversees the accounting and financial reporting practices of CPESN, monitors the quality and integrity of the financial reports of the Company, and reviews the Company's financial performance against its goals and strategic plan.

# CPESN USA Structure

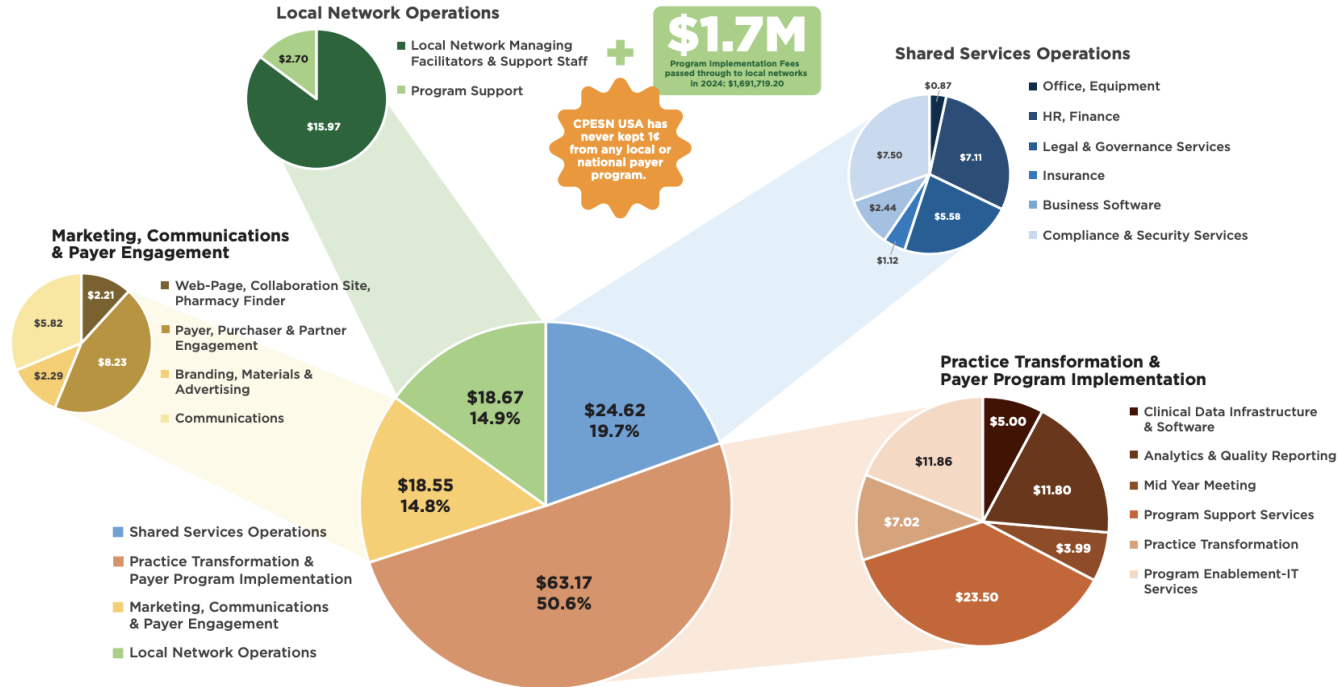


# Participation Fees



# Participation Fees

## So Where Does Your \$125/Month Go?



# Local Network Operations

- Local networks have their own corporate structures – LLC or other type of legal entity.
  - Local entities/networks may have additional participation fees or other requirements
- All pharmacies must affiliate with a primary network
  - Pharmacies can also choose to affiliate with "secondary" networks if they meet the network's requirements with no additional USA charges (although some local networks may have local network dues)

# Special Purpose Programs (SPPs)

- There are Special Purpose Programs (ex. Community Health, Pharmacy Care at Home) that pharmacies may choose to enroll in.
  - SPP may also have Luminaries and can be their own entity
  - Fees and participation requirements may also differ from general USA level
  
- View the offerings on the [CPESN Marketplace](#)

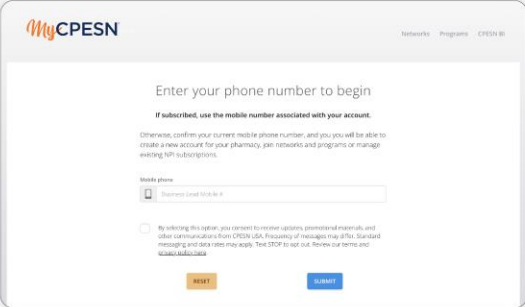
# MyCPESN

Allows you to:

- To update your pharmacy and contact information
- View your CPESN BI reports
- Access the Toolshed which houses resources
- And more!



Log in to MyCPESN



MyCPESN

Networks Programs CPESN BI

## Enter your phone number to begin

If subscribed, use the mobile number associated with your account.  
Otherwise, confirm your current mobile phone number, and you will be able to create a new account for your pharmacy, join networks and programs or manage existing NP subscriptions.

Mobile phone

By selecting this option, you consent to receive updates, promotional materials and other communications from CPESN USA. Frequency of messages may differ. Standard messaging and data rates may apply. Text STOP to opt out. Review our terms and conditions.

RESET SUBMIT

# Introduction & Overview to CPESN and CIN